

CERTIFIED LAND CORNER RECORDATION

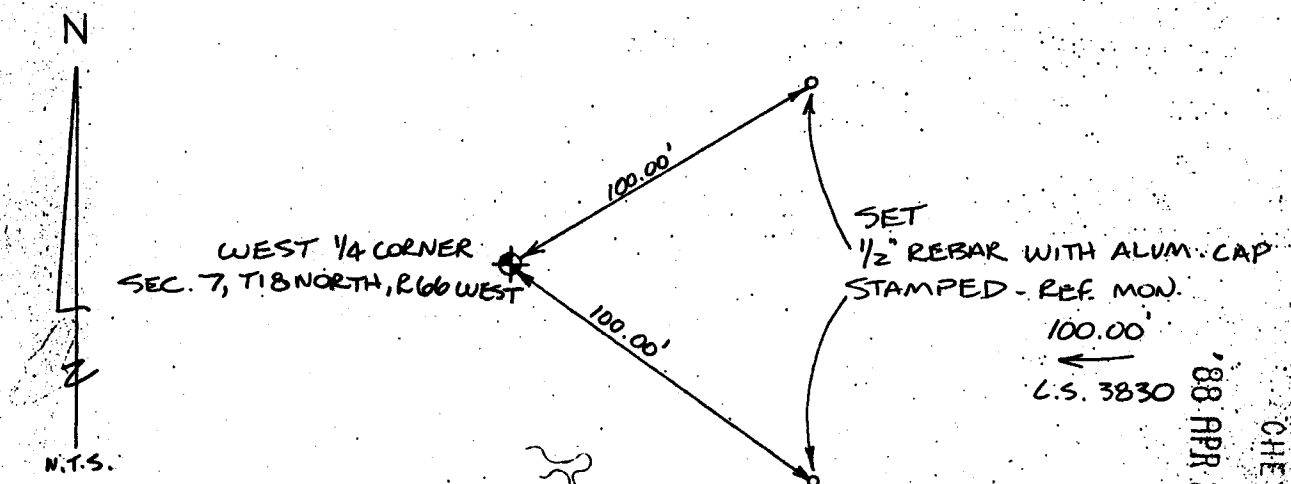
DESCRIPTION OF CORNER EVIDENCE FOUND, AND ORIGINAL RECORD (if known)
 FOUND STONE BROKEN IN 2 PIECES WITH 1/4" CHISELED
 ON TOP PIECE.

ORIGINAL RECORD CALLS FOR 16" x 14" x 8" SAND STONE

DESCRIPTION OF MONUMENT AND ACCESSORIES ESTABLISHED
 TO PERPETUATE THE ORIGINAL LOCATION OF THIS CORNER:

SET 1/2" REBAR WITH CAP L.S. 3830 IN CENTER OF BROKEN PIECES OF STONE.
 SET 2 REBAR WITH ALUM CAPS STAMPED - REF. MON.
 100.00'
 ←
 L.S. 3830

SKETCH, WITH COURSE AND DISTANCE TO ADJACENT CORNER IF DETERMINED IN THIS SURVEY.
 (May Sketch or Paste Reproduction on Reverse Side.)



RECEIVED
 LARAMIE COUNTY
 CHEYENNE, WY.
 88 APR 27 PM 12 24
 043116

I, WALLACE C. MUSCOTT certify that I have carefully performed or reviewed the work done on the diagrammed corner as reported on this recordation form and approve the same.

Wallace C. Muscott #3830
 Signature STATE OF WYOMING Registration No.

STATE OF WYOMING,
 Office of Clerk and Recorder,
 County of _____

This "corner record" was filed for record on the _____ day of _____, 19____, was noted on the cross-index plat and is assigned page No. _____, in book No. _____

James C. Whitaker
 County Official

Cross Index No. <u>G-1</u>	T. <u>18N</u>	R. <u>66 W</u>	Mer. <u>6th</u>
_____	T. _____	R. _____	Mer. _____
_____	T. _____	R. _____	Mer. _____
_____	T. _____	R. _____	Mer. _____
_____	T. _____	R. _____	Mer. _____
_____	T. _____	R. _____	Mer. _____
_____	T. _____	R. _____	Mer. _____